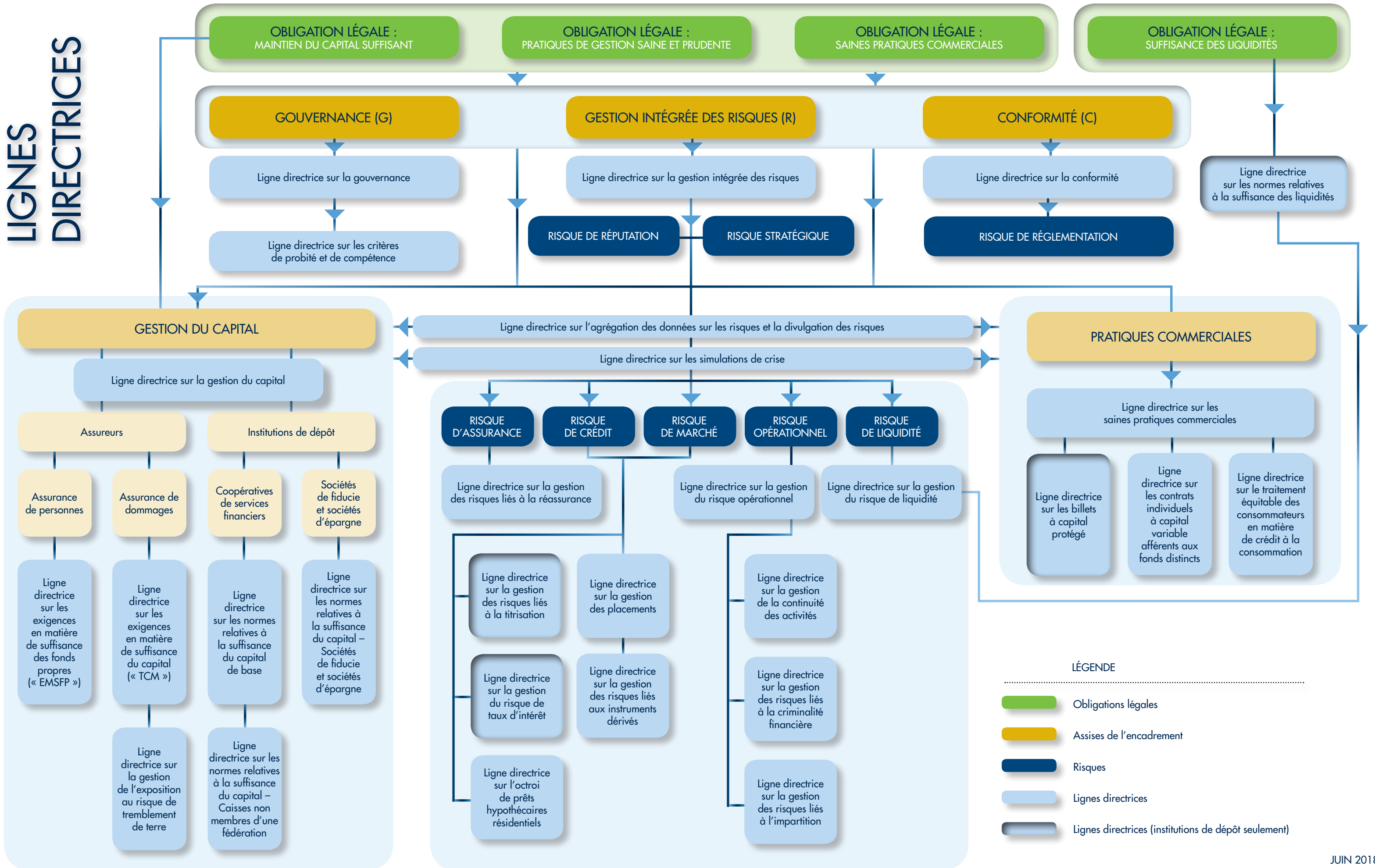


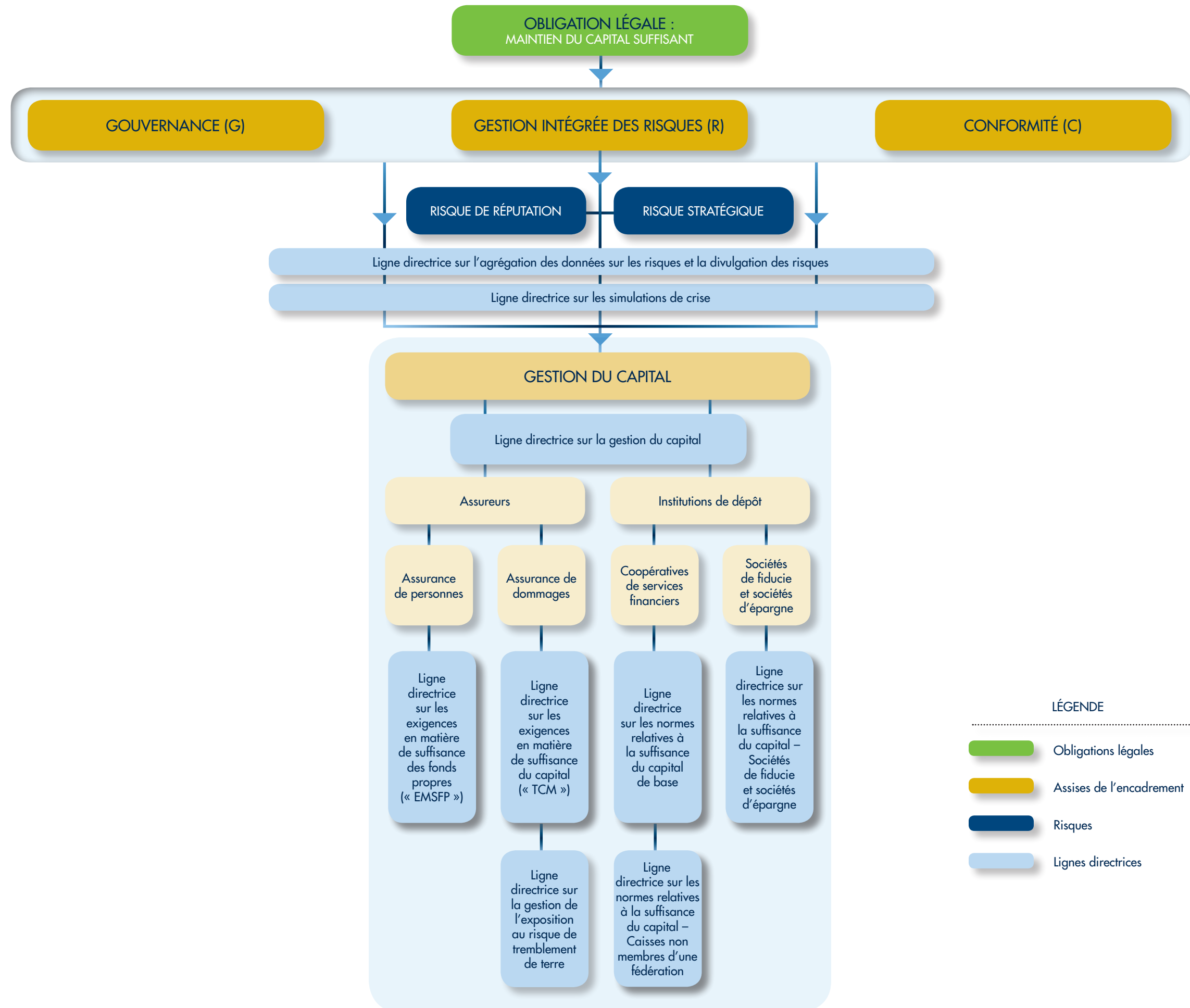
# LIGNES DIRECTRICES



**LÉGENDE**

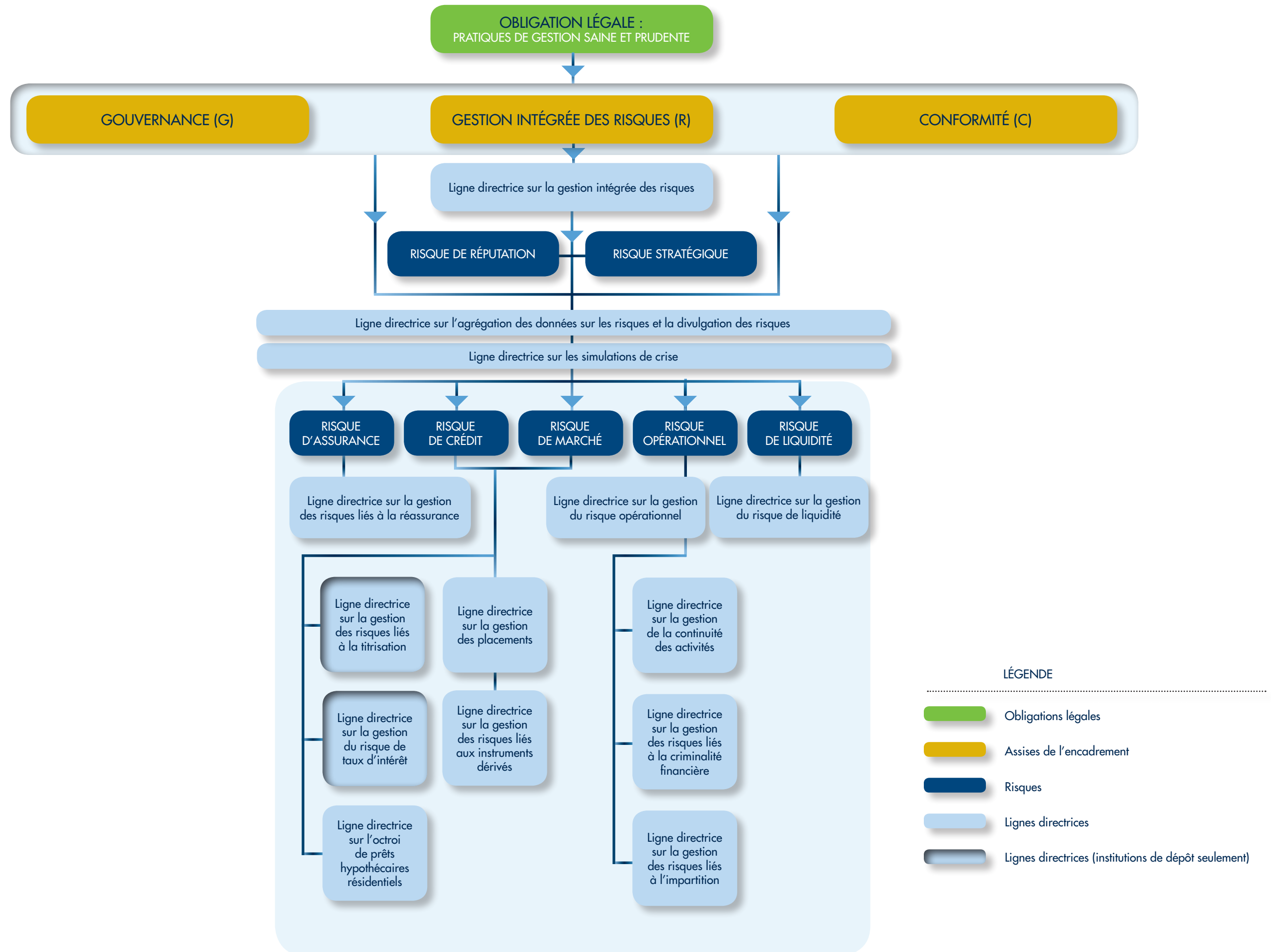
- Obligations légales
- Assises de l'encadrement
- Risques
- Lignes directrices
- Lignes directrices (institutions de dépôt seulement)

# SUFFISANCE DU CAPITAL

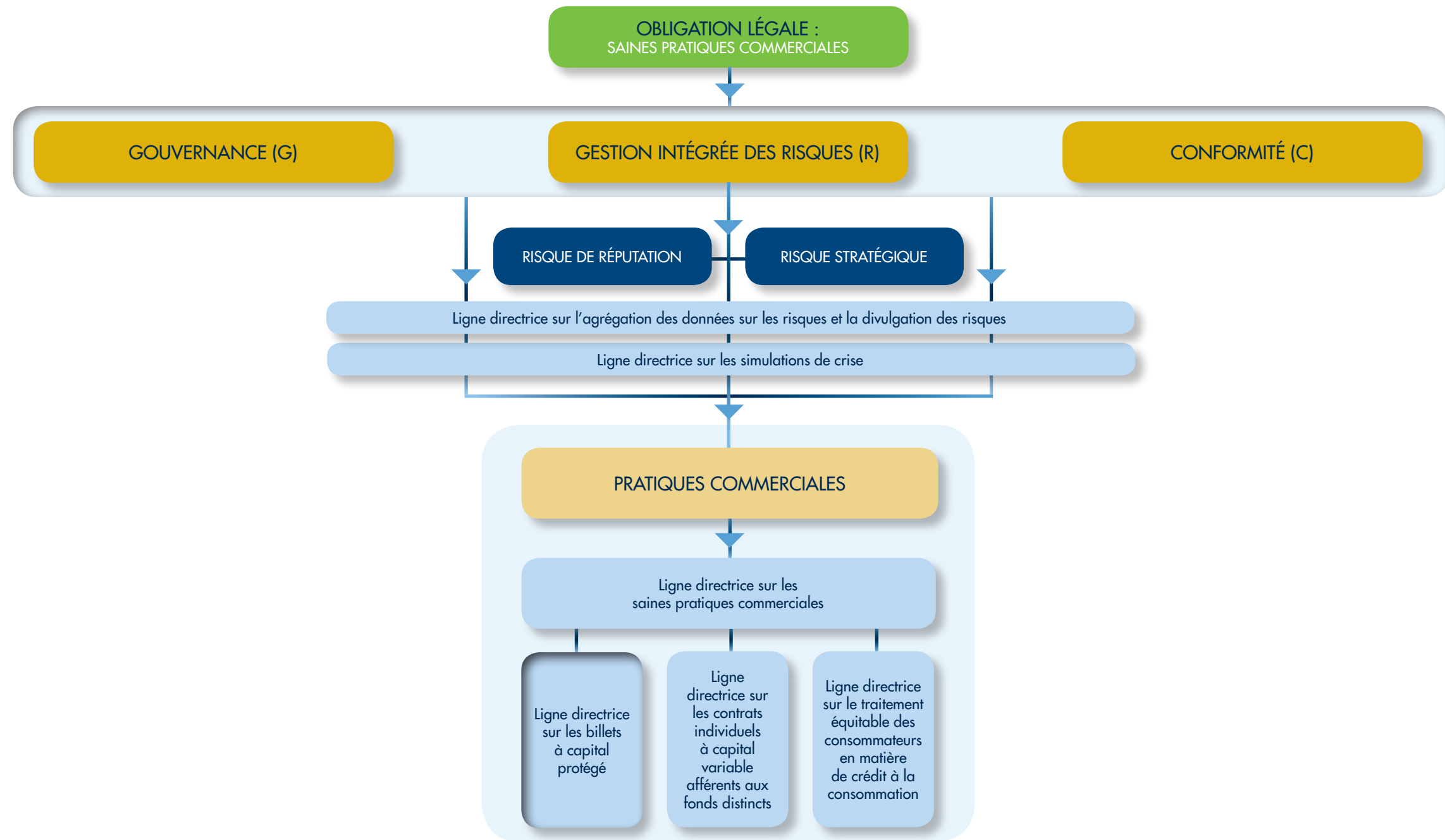


- LÉGENDE**
- Obligations légales
  - Assises de l'encadrement
  - Risques
  - Lignes directrices






# PRATIQUE DE GESTION SAINNE ET PRUDENTE



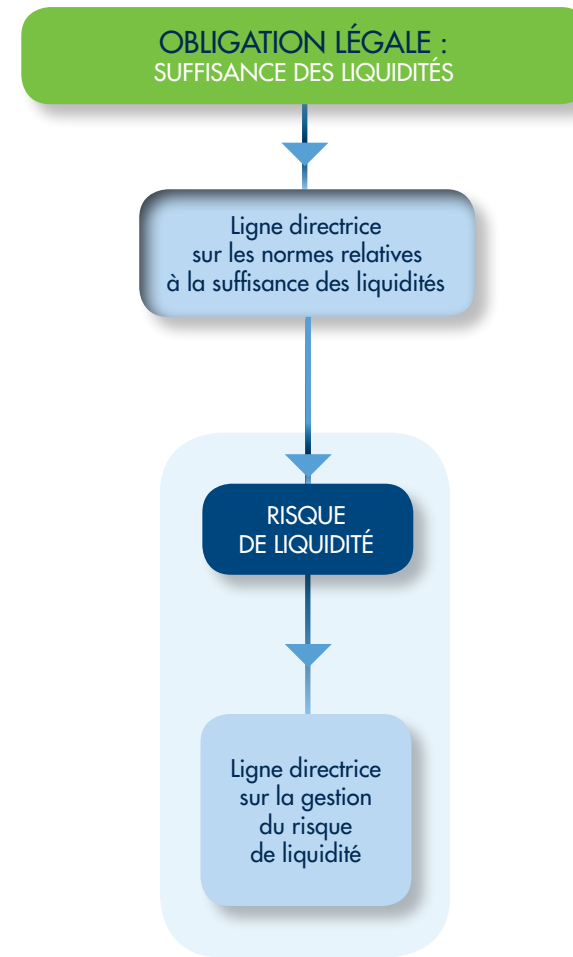
# PRATIQUES COMMERCIALES






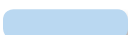

## LÉGENDE

-  Obligations légales
-  Assises de l'encadrement
-  Risques
-  Lignes directrices
-  Lignes directrices (institutions de dépôt seulement)

# SUFFISANCE DES LIQUIDITÉS



## LÉGENDE

-  Obligations légales
-  Assises de l'encadrement
-  Risques
-  Lignes directrices
-  Lignes directrices (institutions de dépôt seulement)